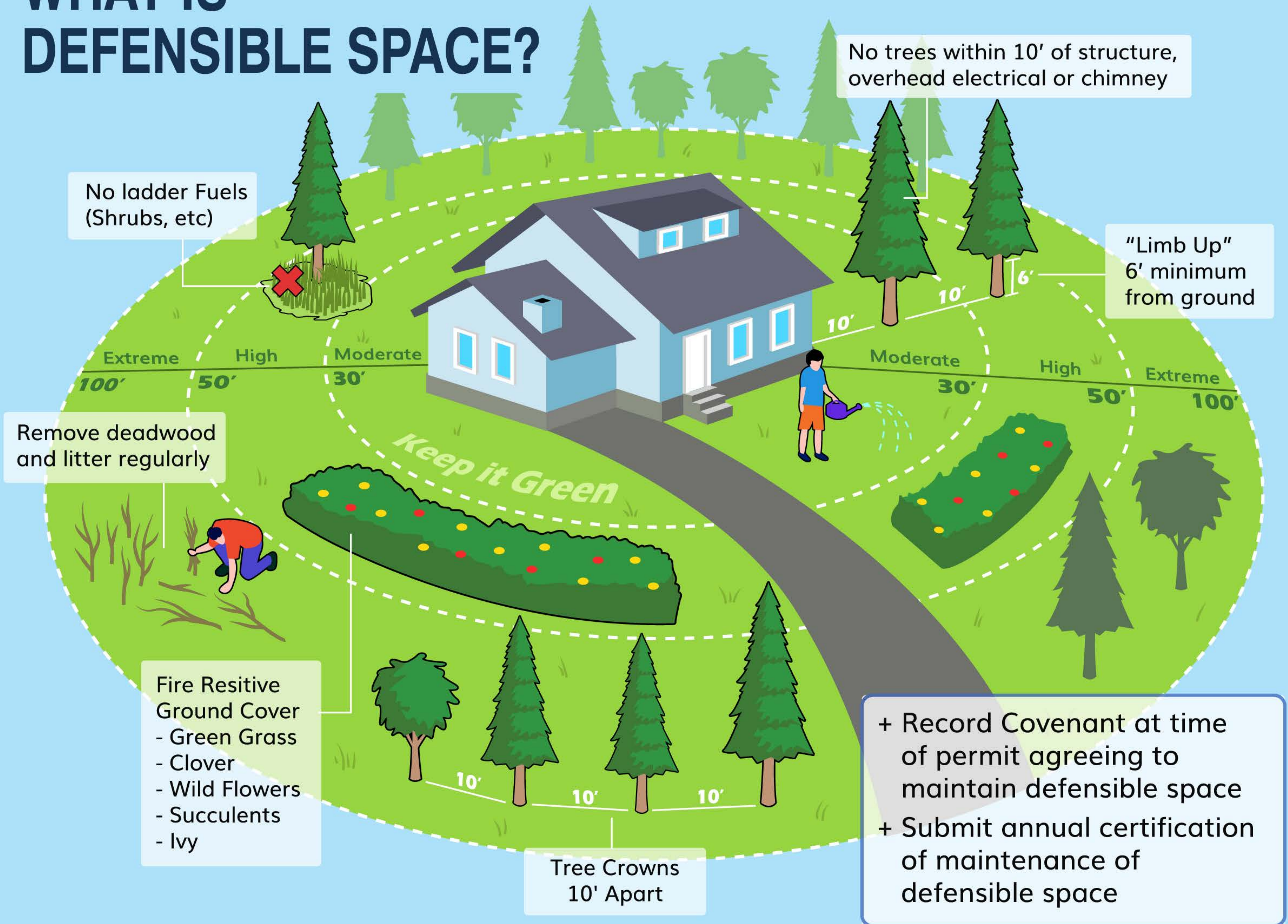


# WHAT IS DEFENSIBLE SPACE?



No trees within 10' of structure, overhead electrical or chimney

No ladder Fuels (Shrubs, etc)

"Limb Up" 6' minimum from ground

Remove deadwood and litter regularly

- Fire Resitive Ground Cover
- Green Grass
  - Clover
  - Wild Flowers
  - Succulents
  - Ivy

- + Record Covenant at time of permit agreeing to maintain defensible space
- + Submit annual certification of maintenance of defensible space

Tree Crowns 10' Apart