

# Special Election

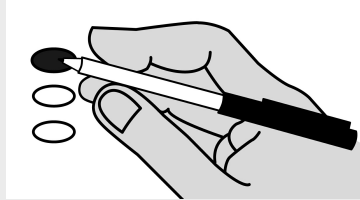
Sample Ballot

Cowlitz County, Washington

April 25, 2023

## Instructions

### How to vote

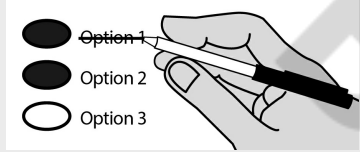


Use a blue or black ink pen.

Vote for one in each contest.

If you vote for more than one, no votes will be counted for that contest.

### If you make a mistake



Draw a line through the entire response.

Then you may make another choice.

### Who donates to campaigns?

View contributors for candidates and measures at:

**Public Disclosure Commission**

[www.pdc.wa.gov](http://www.pdc.wa.gov)

Toll Free (877) 601-2828

### Woodland School District No. 404 Proposition 1

Replacement School Support Levy for Educational Programs and Operations

The Board of Directors of Woodland School District No. 404 adopted Resolution No. 23-01 concerning the replacement of an expiring school support levy. This proposition provides funding for educational programs and operations not funded by the State. If approved, Proposition 1 will authorize the District to levy the following excess taxes, on all taxable property within the District, all as provided in Resolution No. 23-01:

Collection Years	Approximate Levy Rate/\$1,000 Assessed Value	Levy Amount
2024	\$1.91	\$5,900,000
2025	\$1.91	\$6,250,000
2026	\$1.91	\$6,625,000

Should this proposition be approved?

Yes

No

Sample Ballot

This page intentionally left blank