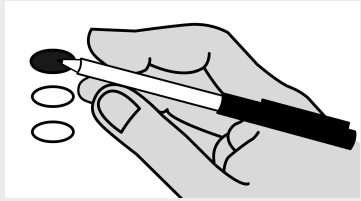


# General Election

Sample Ballot  
Cowlitz County, Washington  
November 3, 2020

## Instructions

### How to vote

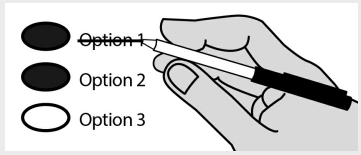


Use a blue or black ink pen.

Vote for one in each race.

If you vote for more than one, no votes will be counted for that race.

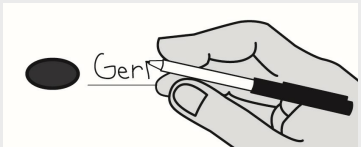
### If you make a mistake



Draw a line through the entire response or candidate's name.

Then you may make another choice.

### Optional write-in



To vote for a candidate not listed, fill in the oval to the left of the line and print the name of the candidate.

### Who donates to campaigns?

View contributors for candidates and measures at:

**Public Disclosure Commission**

[www.pdc.wa.gov](http://www.pdc.wa.gov)

Toll Free (877) 601-2828

**Note:** This sample ballot includes all measures and races presented within the county. Only races and measures you are entitled to vote upon will appear on your Official ballot.

## State of Washington

### Referendum Measure No. 90

The legislature passed Engrossed Substitute Senate Bill 5395 concerning comprehensive sexual health education. This bill would require school districts to adopt or develop, consistent with state standards, comprehensive age-appropriate sexual health education, as defined, for all students, and excuse students if their parents request.

Should this bill be:

- Approved  
 Rejected

### Advisory Vote No. 32

Engrossed Substitute Senate Bill 5323

The legislature imposed, without a vote of the people, a retail sales tax on pass-through charges retail establishments collect for specified carryout bags, costing \$32,000,000 in its first ten years, for government spending.

This tax increase should be:

- Repealed  
 Maintained

### Advisory Vote No. 33

Substitute Senate Bill 5628

The legislature imposed, without a vote of the people, a tax on heavy equipment rentals to consumers by heavy equipment rental property dealers, costing \$103,000,000 in its first ten years, for government spending.

This tax increase should be:

- Repealed  
 Maintained

### Advisory Vote No. 34

Engrossed Substitute Senate Bill 6492

The legislature increased, without a vote of the people, the business and occupation tax rate for certain businesses, while reducing certain surcharges, costing \$843,000,000 in its first ten years, for government spending.

This tax increase should be:

- Repealed  
 Maintained

### Advisory Vote No. 35

Engrossed Senate Bill 6690

The legislature increased, without a vote of the people, the business and occupation tax on manufacturers of commercial airplanes, including components or tooling, costing \$1,024,000,000 in its first ten years, for government spending.

This tax increase should be:

- Repealed  
 Maintained

## Proposed Constitutional Amendment Engrossed Senate Joint Res. No. 8212

The legislature has proposed a constitutional amendment on investment of public funds. This amendment would allow public money held in a fund for long-term care services and supports to be invested by governments as authorized by state law, including investments in private stocks.

Should this constitutional amendment be:

- Approved  
 Rejected

## Federal - Partisan Office

### U.S. President / Vice President

- Joseph R. Biden / Kamala D. Harris  
*Democratic Party Nominees*
- Donald J. Trump / Michael R. Pence  
*Republican Party Nominees*
- Jo Jorgensen / Jeremy "Spike" Cohen  
*Libertarian Party Nominees*
- Howie Hawkins / Angela Walker  
*Green Party Nominees*
- Gloria La Riva / Sunil Freeman  
*Socialism and Liberation Party Nominees*
- Alyson Kennedy / Malcolm M. Jarrett  
*Socialist Workers Party Nominees*
- \_\_\_\_\_

**READ: Each candidate for President and Vice President is the official nominee of a political party. For other partisan offices, each candidate may state a political party that he or she prefers. A candidate's preference does not imply that the candidate is nominated or endorsed by the party, or that the party approves of or associates with that candidate.**

## Federal - Partisan Office

### U.S. Representative Congressional District 3

- Jaime Herrera Beutler  
*(Prefers Republican Party)*
- Carolyn Long  
*(Prefers Democratic Party)*
- \_\_\_\_\_

## State - Partisan Offices

### Governor

- Jay Inslee  
*(Prefers Democratic Party)*
- Loren Culp  
*(Prefers Republican Party)*
- \_\_\_\_\_

### Lt. Governor

- Denny Heck  
*(Prefers Democratic Party)*
- Marko Liias  
*(Prefers Democratic Party)*
- \_\_\_\_\_

### Secretary of State

- Kim Wyman  
*(Prefers Republican Party)*
- Gael Tarleton  
*(Prefers Democratic Party)*
- \_\_\_\_\_

### State Treasurer

- Mike Pellicciotti  
*(Prefers Democratic Party)*
- Duane A. Davidson  
*(Prefers Republican Party)*
- \_\_\_\_\_

Continue voting next side →

# General Election

Sample Ballot  
Cowlitz County, Washington  
November 3, 2020

## State - Partisan Offices

### State Auditor

- Pat (Patrice) McCarthy  
*(Prefers Democratic Party)*
- Chris Leyba  
*(Prefers Republican Party)*
- \_\_\_\_\_

### Attorney General

- Bob Ferguson  
*(Prefers Democratic Party)*
- Matt Larkin  
*(Prefers Republican Party)*
- \_\_\_\_\_

### Commissioner of Public Lands

- Hilary Franz  
*(Prefers Democratic Party)*
- Sue Kuehl Pederson  
*(Prefers Republican Party)*
- \_\_\_\_\_

## State - Nonpartisan Office

### Superintendent of Public Instruction

- Chris Reykdal
- Maia Espinoza
- \_\_\_\_\_

## State - Partisan Office

### Insurance Commissioner

- Mike Kreidler  
*(Prefers Democratic Party)*
- Chirayu Avinash Patel  
*(Prefers Republican Party)*
- \_\_\_\_\_

## Legislative - Partisan Offices

### State Senator Legislative District 19

- Dean Takko  
*(Prefers Democratic Party)*
- Jeff Wilson  
*(Prefers Republican Party)*
- \_\_\_\_\_

### State Representative Pos. 1 Legislative District 19

- Jim Walsh  
*(Prefers Republican Party)*
- Marianna Everson  
*(Prefers Democratic Party)*
- \_\_\_\_\_

### State Representative Pos. 2 Legislative District 19

- Joel McEntire  
*(Prefers Republican Party)*
- Brian E. Blake  
*(Prefers Democratic Party)*
- \_\_\_\_\_

### State Senator Legislative District 20

- John Braun  
*(Prefers Republican Party)*
- \_\_\_\_\_

### State Representative Pos. 1 Legislative District 20

- Peter Abbarno  
*(Prefers Republican Party)*
- Timothy Zahn  
*(Prefers Democratic Party)*
- \_\_\_\_\_

### State Representative Pos. 2 Legislative District 20

- Ed Orcutt  
*(Prefers Republican Party)*
- Will Rollet  
*(Prefers Democratic Party)*
- \_\_\_\_\_

## Cowlitz - Partisan Offices

### Cowlitz County Commissioner District 1

- Arne Mortensen  
*(Prefers Republican Party)*
- Will Finn  
*(Prefers Republican Party)*
- \_\_\_\_\_

### Cowlitz County Commissioner District 2

- Dennis P. Weber  
*(Prefers Republican Party)*
- Kurt A. Anagnostou  
*(States No Party Preference)*
- \_\_\_\_\_

## Judicial - Nonpartisan Offices

### Supreme Court Justice Position 3 6 Year Short & Full Term

- Dave Larson
- Raquel Montoya-Lewis
- \_\_\_\_\_

### Supreme Court Justice Position 4

- Charles W. Johnson
- \_\_\_\_\_

### Supreme Court Justice Position 6 2 Year Unexpired Term

- Richard S. Serns
- G. Helen Whitener
- \_\_\_\_\_

### Supreme Court Justice Position 7

- Debra L. Stephens
- \_\_\_\_\_

## Cowlitz - Nonpartisan Office

### Cowlitz Public Utility District Commissioner District 1

- Patrick Harbison
- Bruce Pollock
- \_\_\_\_\_

## Local Measures

### City of Castle Rock Proposition 1

The Castle Rock City Council adopted Resolution No. 2020-05 concerning a proposition to fund public library services by special excess levy. The proposition authorizes the City of Castle Rock, Washington, to levy an excess property tax in the year of 2020 for collection in 2021 of \$0.50 per \$1,000 of full assessed value for a total assessment of \$91,473.40. The excess levy would fund maintenance and operations of the library.

Should this proposition be:

- Approved
- Rejected

### City of Kalama Transportation Benefit District Proposition 1

Sales and Use Tax for Transportation Improvements

The Kalama City Council adopted Resolution No. 693 concerning a sales and use tax to fund transportation improvements in the Kalama Transportation Benefit District. This proposition would establish a sales and use tax of two-tenths of one percent (0.2%) to be collected from all taxable retail sales and uses within the district in accordance with RCW 82.14.0455 for a term of ten (10) years for the purpose of paying costs of transportation improvements identified in the City's Transportation programs.

Shall this proposition be approved?

- Yes
- No

End of ballot