

# Special Election

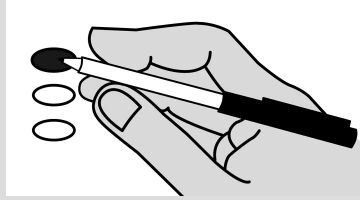
Sample Ballot

Cowlitz County, Washington

April 28, 2020

## Instructions

### How to vote

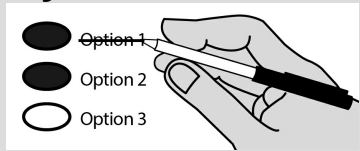


Use a blue or black ink pen.

Vote for one in each contest.

If you vote for more than one, no votes will be counted for that contest.

### If you make a mistake



Draw a line through the entire response.

Then you may make another choice.

### Who donates to campaigns?

View contributors for candidates and measures at:

#### Public Disclosure Commission

[www.pdc.wa.gov](http://www.pdc.wa.gov)

Toll Free (877) 601-2828

**Note:** This Sample Ballot includes all measures and races presented within the county. Only races and measures you are entitled to vote upon will appear on your Official Ballot.

## Kalama School District No. 402 Proposition 1

Replacement Educational Programs and Operation Levy

The Board of Directors of Kalama School District No. 402 adopted Resolution No. 2019/20-05, concerning a proposition to finance educational programs and operation expenses. This proposition would authorize the District to meet the educational needs of its students by levying the following excess taxes, in place of an expiring levy, on all taxable property within the District, for support of the District's educational programs and operation expenses not funded by the State of Washington:

Collection Year	Estimated Levy Rate/\$1,000 Assessed Value	Levy Amount
2021	\$1.50	\$2,329,475
2022	\$1.50	\$2,492,539
2023	\$1.50	\$2,667,016

all as provided in Resolution No. 2019/20-05. Should this proposition be approved?

Levy Yes

Levy No

Continue next page



## Special Election

Sample Ballot

Cowlitz County, Washington

April 28, 2020

### Woodland School District No. 404

#### Proposition 1

Replacement School Support Levy for Educational Programs and Operations

The Board of Directors of Woodland School District No. 404 adopted Resolution No. 20-02 concerning the replacement of an expiring school support levy. This proposition provides funding for educational programs and operations not funded by the State. If approved, Proposition 1 will authorize the District to levy the following excess taxes, on all taxable property within the District, all as provided in Resolution No. 20-02:

Collection Years	Approximate Levy Rate/\$1,000 Assessed Value	Levy Amount
2021	\$2.37	\$5,400,000
2022	\$2.36	\$5,750,000
2023	\$2.36	\$6,100,000

Should this proposition be approved?

Yes

No

End of ballot