

# Special Election

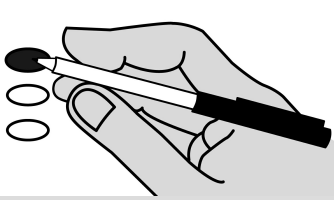
Sample Ballot

Cowlitz County, Washington

February 11, 2020

## Instructions

### How to vote

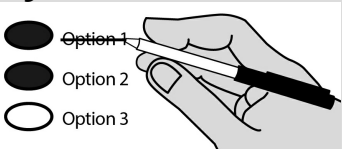


Use a blue or black ink pen.

Vote for one in each contest.

If you vote for more than one, no votes will be counted for that contest.

### If you make a mistake



Draw a line through the entire response.

Then you may make another choice.

### Who donates to campaigns?

View contributors for candidates and measures at:

**Public Disclosure Commission**

[www.pdc.wa.gov](http://www.pdc.wa.gov)

Toll Free (877) 601-2828

**Note:** This Sample Ballot includes all measures and races presented within the county. Only races and measures you are entitled to vote upon will appear on your Official Ballot.

## Longview School District No. 122 Proposition 1

Replacement Educational Programs and Operations Levy

The Board of Directors of Longview School District No. 122 adopted Resolution No. 776 concerning a proposition for a replacement levy for educational programs and operations. This proposition provides funding for educational programs and operations expenses not fully funded by the State. If approved, Proposition 1 will authorize the District to levy the following excess taxes, on all taxable property within the District, as provided in Resolution No. 776:

Collection Years	Approximate Levy Rate/\$1,000 Assessed Value	Levy Amount
2021	\$2.22	\$13,790,705
2022	\$2.22	\$14,496,559
2023	\$2.22	\$15,235,033
2024	\$2.22	\$16,007,613

Should this proposition be approved?

Yes

No

Continue next page



# Special Election

Sample Ballot

Cowlitz County, Washington

February 11, 2020

## Toutle Lake School District No. 130 Proposition 1

Replacement Educational Programs and Operation Levy

The Board of Directors of Toutle Lake School District No. 130 adopted Resolution No. 13-19, concerning a proposition to finance educational programs and operation expenses. This proposition would authorize the District to levy the following excess taxes, replacing an expiring levy, on all taxable property within the District, for educational programs and operation expenses not funded by the State:

Collection Year	Estimated Levy Rate/\$1,000 Assessed Value	Levy Amount
2021	\$2.50	\$1,358,225
2022	\$2.50	\$1,453,300
2023	\$2.50	\$1,555,030
2024	\$2.50	\$1,663,885

all as provided in Resolution No. 13-19 and subject to legal limits on levy rates and amounts at the time of levy. Should this proposition be approved?

- Levy Yes
- Levy No

## Castle Rock School District No. 401 Proposition 1

Educational Program and Operations Replacement Levy

The Board of Directors of Castle Rock School District No. 401 adopted Resolution No. 2019-90 concerning educational funding. This proposition authorizes the District to levy the following excess taxes, to replace an expiring levy, on all taxable property within the District, to support the District's educational program and operations, which are not funded or not fully funded by the State:

Collection Years	Approximate Levy Rate/\$1,000 Assessed Value	Levy Amount
2021	\$1.98	\$2,375,000
2022	\$1.98	\$2,575,000

all as provided in the Resolution subject to legal limits at the time of levy. Should this proposition be approved?

- Yes
- No

## Castle Rock School District No. 401 Proposition 2

Facility Improvement General Obligation Bonds

The Board of Directors of Castle Rock School District adopted Resolution No. 2019-91 concerning a proposition to make capital improvements to school facilities. The proposition authorizes the District to construct and equip a new Middle School campus, and modify or remodel the Elementary School campus, issue \$34,700,000 of general obligation bonds maturing within a maximum of 21 years, and levy additional property taxes annually to repay the bonds, all as provided in Resolution No. 2019-91.

Should this proposition be:

- Approved
- Rejected

Continue next page



# Special Election

Sample Ballot

Cowlitz County, Washington

February 11, 2020

## Kalama School District No. 402 Proposition 1

Replacement Educational Programs and Operation Levy

The Board of Directors of Kalama School District No. 402 adopted Resolution No. 2019/20-03, concerning a proposition to finance educational programs and operation expenses. This proposition would authorize the District to meet the educational needs of its students by levying the following excess taxes, in place of an expiring levy, on all taxable property within the District, for support of the District's educational programs and operation expenses not funded by the State of Washington:

Collection Year	Estimated Levy Rate/\$1,000 Assessed Value	Levy Amount
2021	\$2.23	\$3,250,947
2022	\$2.17	\$3,300,947
2023	\$2.15	\$3,400,947

all as provided in Resolution No. 2019/20-03. Should this proposition be approved?

- Levy Yes
- Levy No

## Woodland School District No. 404 Proposition 1

Replacement School Support Levy for Educational Programs and Operations

The Board of Directors of Woodland School District No. 404 adopted Resolution No. 19-09 concerning the replacement of an expiring school support levy. This proposition provides funding for educational programs and operations not funded by the State. If approved, Proposition 1 will authorize the District to levy the following excess taxes, on all taxable property within the District, all as provided in Resolution No. 19-09:

Collection Years	Approximate Levy Rate/\$1,000 Assessed Value	Levy Amount
2021	\$2.37	\$5,400,000
2022	\$2.36	\$5,750,000
2023	\$2.36	\$6,100,000

Should this proposition be approved?

- Yes
- No

Continue next page



# Special Election

Sample Ballot

Cowlitz County, Washington

February 11, 2020

## Kelso School District No. 458

### Proposition 1

Replacement of Expiring Educational Programs and Operations Levy

The Board of Directors of Kelso School District No. 458 adopted Resolution No. 2019/20-05, concerning a proposition to finance educational programs and operations. This proposition would authorize the District to levy the following excess taxes, replacing an expiring levy, on all taxable property within the District, for educational programs and operations expenses not funded by the State, including teaching and support staff, smaller class sizes, instructional materials, maintenance, athletics and student activities:

Collection Year	Estimated Levy Rate/\$1,000 Assessed Value	Levy Amount
2021	\$2.07	\$6,000,000
2022	\$2.13	\$6,500,000
2023	\$2.19	\$7,000,000
2024	\$2.23	\$7,500,000

all as provided in Resolution No. 2019/20-05. Should this proposition be approved?

Levy Yes

Levy No

**End of ballot**