

# Millennium Bulk Terminals-Longview HIA Focus Group

October 27, 2015

Cowlitz County Health Department  
Suite 1-B  
900 Ocean Beach Highway, Longview, WA



# Welcome and Introductions

Jennifer Vines, MD, MPH, Health Officer  
*Cowlitz County Health & Human Services*

Elaine Placido, DPA, Director  
*Cowlitz County Department of Building & Planning*

Rad Cunningham, MPH, MPA, Epidemiologist  
*Healthy Community Design, Division of Environmental Public Health, Washington  
State Department of Health*

Michael O'Neill, Healthy Communities Lead  
*Cowlitz County Health & Human Services*



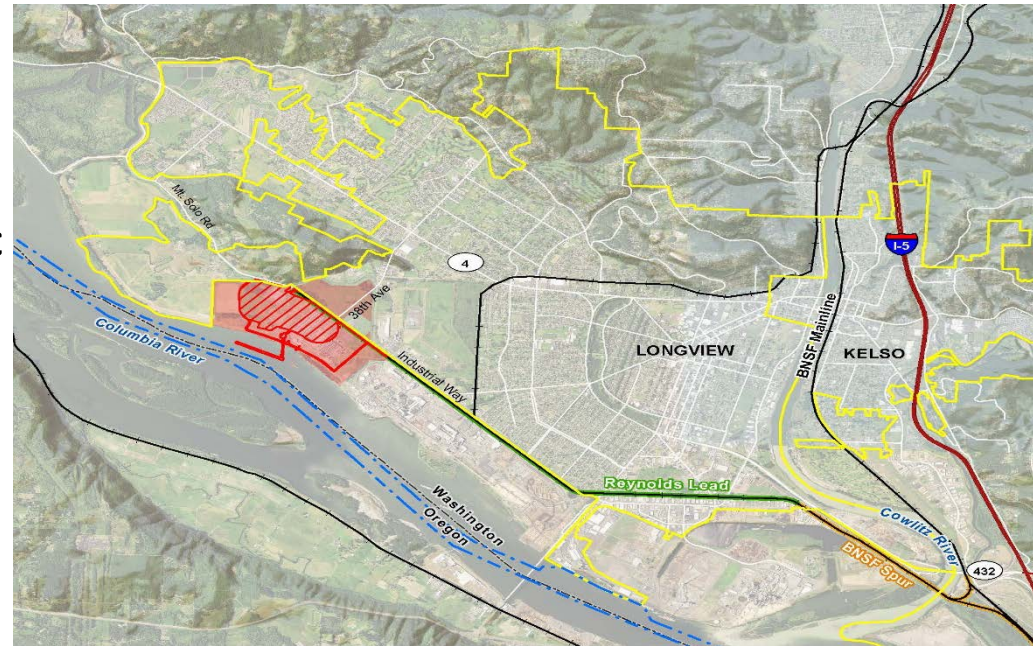
# Agenda

1. Welcome and Introductions
2. Millennium Bulk Terminals-Longview: Project and EIS Overview
3. Introduction to Health Impact Assessments
4. Facilitated Break-Out Sessions
5. Report Out/Summarize
6. Next Steps



## Millennium's stated purpose of the project:

1. Reuse and redevelop the existing industrial terminal into an export terminal capable of exporting up to 44 million metric tons of coal annually to meet international and domestic demand; and
2. Establish an efficient, direct shipping route to Asia, via the BNSF rail lines and vessel transport on the Columbia River.



*The Millennium Bulk Terminals – Longview site was formally an aluminum smelter (operated between the 1940s and 2000).*

## Project Objectives: Local Economy

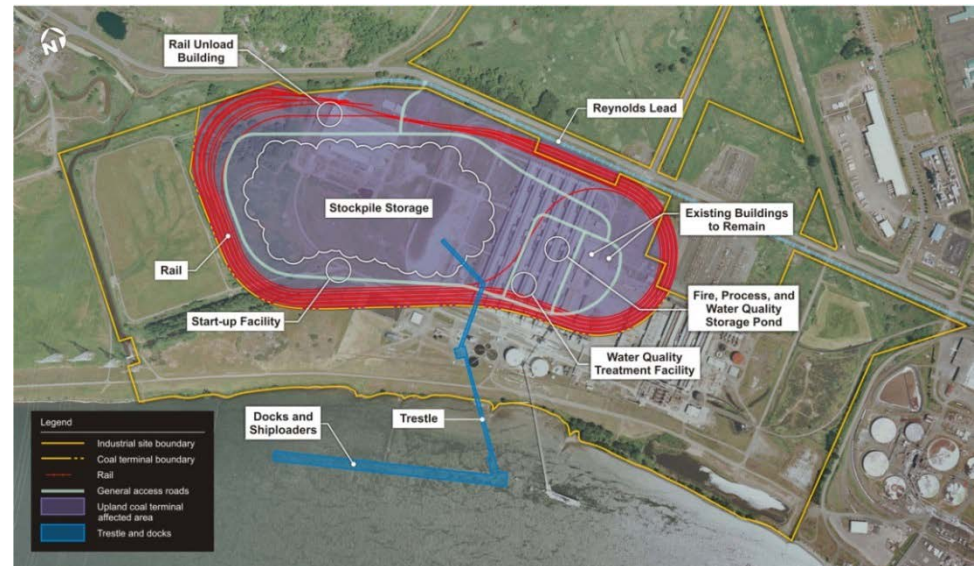
- Reduce local unemployment
  - As of May 2015, Cowlitz County's unemployment rate was 7.6%, higher than both the national and state averages
- Create new jobs
  - Over a thousand construction employment opportunities
  - Add approximately 135 new family-wage jobs to operate the facility
- Generate tax revenues for local economies





## Project Layout and Operations

- Project will cover approximately 190 acres of 540 acre site
- Final build-out capacity: 44 million metric tons of coal a year
- Includes coal handling and storage area, 2 new docks, rail loop
- 730 ships a year
- 16 trains per day (8 loaded and 8 unloaded)



Source: Millennium Bulk Terminals – Longview, LLC

Millennium Bulk Terminals-Longview, LLC proposes to construct and operate an export shipping terminal for receiving, stockpiling, and transferring coal to cargo ships.

## Project Status

- Millennium Bulk Terminals – Longview, LLC proposes to construct and operate an export shipping terminal in Cowlitz County
- Federal, state, and local permits are needed for construction and operation
- Issuance of permits require completion of environmental analyses, per federal and state regulations
- It has been determined, under the National Environmental Policy Act (NEPA) and the Washington State Environmental Policy Act (SEPA) that an environmental impact statement (EIS) needs to be performed
- The U.S. Army Corps of Engineers, the lead federal agency, together with the Washington State Department of Ecology and Cowlitz County have joined together to conduct separate, but synchronized EIS reviews



## SEPA EIS General Process



The Final EIS is used to inform the Lead Agencies



**Department of Ecology and Other State Agencies' Decisions**

*Ecology's Water Quality Certification, Department of Natural Resources' state-owned aquatic lands lease, and others.*

**Cowlitz County Decisions**

*Decisions on development permits and other county-level permits related to site development.*



## Technical areas being analyzed in the EISs:

Aesthetics, including Light and Glare	Coal Dust and Spills	Recreation and Public Services
Air Quality	Greenhouse Gas Emissions	Transportation (Vehicle, Rail, and Vessel)
Animals, including Fish	Hazardous Materials	Utilities Social Resources, including Environmental Justice
Climate Change	Historic and Cultural Preservation	Vegetation, including Wetlands
Earth (Soils and Geology)	Land and Shoreline Use	Water: Surface and Ground (Stormwater)
Energy and Natural Resources	Noise and Vibration	Water Quality

## Relationship between EIS and HIA

- Two separate processes and schedules
- EIS findings may be used to inform the HIA analysis

# Health Impact Assessment

A cutting edge tool for bringing public health science to cross-sector policies and projects

Rad Cunningham  
Healthy Community Design  
Washington State Department of Health



# Root causes





# HIA, a structured, flexible process



- Predicts anticipated health outcomes of a decision
- Translates that information into recommendations for balanced, well-informed policies and projects
- Helps decision makers weigh trade-offs and understand the direct and indirect health impacts of their work
- HIA's purpose is to improve health, track unintended consequences and mitigate risk

# National Research Council Definition



“HIA is a **systematic process** that uses an array of **data sources and analytic methods** and considers input from **stakeholders** to determine the **potential effects** of a proposed policy, plan, program, or project on the **health of a population** and the distribution of those effects within the population. HIA provides **recommendations on monitoring and managing** those effects.”

## HIA: Process



- Screening
- Scoping
- Assessment
- Recommendations
- Reporting
- Monitoring

## HIA: Features



- Forecasts impacts
- Judges magnitude of health impacts
- Assesses a range of possible impacts for all impacted populations
- Explicitly assesses impacts on vulnerable population(s)
- Includes stakeholders and decision makers in the process
- Makes recommendations to mitigate negative impacts and increase positive impacts



# HIA: Challenges



- Defining health and the boundaries of health
- Balancing timeliness with a thorough review of evidence
- Producing quantitative estimates of health effects
- Synthesizing conclusions on dissimilar health effects
- Engaging stakeholders
- Cross-discipline communication
- Ensuring the quality and credibility of HIA
- Managing Expectations

# HIA Examples



To see examples of completed HIA's please visit:

[www.hiasociety.org](http://www.hiasociety.org) - SOPHIA



[www.hiaguide.org](http://www.hiaguide.org) – UCLA HIA Clearinghouse



# MILLENNIUM Bulk Terminals - Longview

**HIA** Health Impact Assessment

<http://www.millenniumbulkeiswa.gov/health-impact-assessment.html>

