

Millennium Bulk Terminals—Longview Health Impact Assessment Steering Committee Meeting

September 28, 2016
10:00 a.m. – 1:00 p.m.

Longview Public Library
1600 Louisiana Street, Longview, WA



Welcome and Introductions

Elaine Placido, DPA, Director
Cowlitz County Department of Building & Planning

Dr. Jennifer Vines, MD, MPH, Health Officer
Cowlitz County Health & Human Services

Rad Cunningham, MPH, MPA, Epidemiologist
*Healthy Community Design, Division of Environmental Public Health,
Washington State Department of Health*



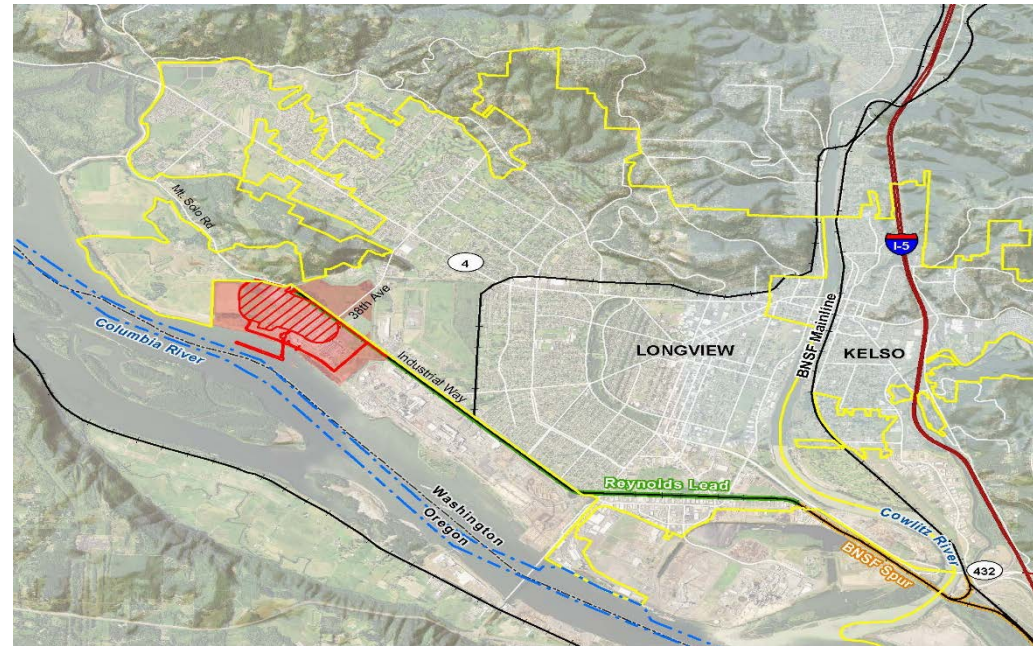
Agenda

1. Welcome and Introductions
2. Project Overview
3. HIA Purpose and Process
4. General Themes from Focus Group Meetings
5. Steering Committee Membership
6. Steering Committee Collaboration Agreement
7. Process for Public Input
8. Meeting Schedule
9. Public Comment Period (15 minutes)



Millennium's Stated Purpose of the Project

1. Reuse and redevelop the existing industrial terminal into an export terminal capable of exporting up to 44 million metric tons of coal annually to meet international and domestic demand
2. Establish an efficient, direct shipping route to Asia, via the BNSF rail lines and vessel transport on the Columbia River



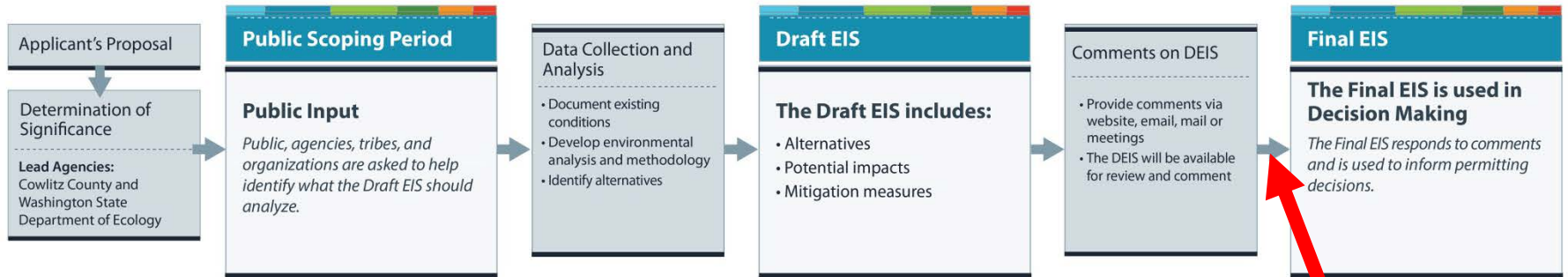
The Millennium Bulk Terminals – Longview site was formerly an aluminum smelter (operated between the 1940s and 2000).

Millennium's Project Objectives

- Enable western U.S. coal to compete in the Pacific international coal supply market
- Diversify Washington State's trade-based economy
- Reduce local unemployment
 - As of May 2015, Cowlitz County's unemployment rate was 7.6%, higher than both the national and state averages
 - Create over 1,000 construction employment opportunities
 - Create approximately 135 new family-wage jobs to operate the new export terminal
 - Generate tax revenues for local economics



SEPA EIS General Process



The Final EIS is used to inform the Lead Agencies

Department of Ecology and Other State Agencies' Decisions

Ecology's Water Quality Certification, Department of Natural Resources' state-owned aquatic lands lease, and others.

Cowlitz County Decisions

Decisions on development permits and other county-level permits related to site development.



Relationship between SEPA EIS and HIA

- The SEPA EIS process is an agency-led analysis of potential impacts on environmental resources.
- The HIA process is a public-led process evaluating impacts on the quality of life in adjacent communities.
- The SEPA EIS and the HIA include separate teams, processes, and schedules.
- EIS findings may be used to inform the HIA analysis.



Health Impact Assessment

A cutting edge tool for bringing public health science to cross-sector policies and projects

Rad Cunningham
Healthy Community Design
Washington State Department of Health



Root Causes



HIA: A Structured, Flexible Process



The HIA's purpose is to improve health, track unintended consequences, and mitigate risk. The HIA also:

- Predicts anticipated health outcomes of a decision;
- Translates that information into recommendations for balanced, well-informed policies and projects; and
- Helps decision makers weigh trade-offs and understand the direct and indirect health impacts of their work.

HIA: National Research Council Definition

“HIA is a systematic process that uses an array of data sources and analytic methods and considers input from stakeholders to determine the potential effects of a proposed policy, plan, program, or project on the health of a population and the distribution of those effects within the population. HIA provides recommendations on monitoring and managing those effects.”



HIA: Six-Step Process

- Screening
- Scoping
- Assessment
- Recommendations
- Reporting
- Monitoring and Evaluation

Focus Group Meetings: Ranked Themes

Rank	Focus Group Themes	Number of People Expressing Interest in Theme
1	Jobs/Economy	49
2	Existing Respiratory Problems Among the Population	22
3	Quality of Life/Community & External Perception	19
4	Coal Dust & Diesel Particulates	17
5	Natural Resources (fisheries, groundwater, farming land)	17
6	Trains (emergency medical services response, local traffic delays, noise, vibrations, rail safety)	11
7	Climate Change and Impacts Outside Cowlitz County	9
8	Usage/Development of Industrial Space	4
9	Project Applicant Accountability	4

Steering Committee Membership



- Identify Co-Chairs
- Review Time Commitments
- Clarify Roles and Responsibilities
(see *Steering Committee Collaboration Agreement*)

Steering Committee Collaboration Agreement

- Review and Comment on the Agreement
- Approve the Agreement at Next Steering Committee Meeting

Opportunities for Public Input

- Brief, 15-minute Public Comment Period at the end of each Steering Committee Meeting
- Public Review on the Draft HIA Report



Upcoming Meetings

- Frequency: Monthly
- Time of Day: Lunch Hour
- Duration: 2 Hours
- Date for Next Steering Committee Meeting: ??



15-Minute Public Comment Period



MILLENNIUM Bulk Terminals - Longview

HIA Health Impact Assessment

<http://www.millenniumbulkeiswa.gov/health-impact-assessment.html>

