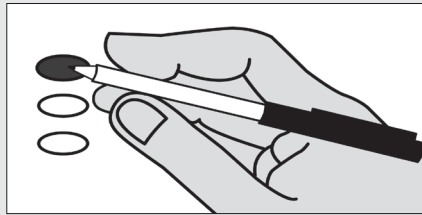


## Instructions

### How to vote

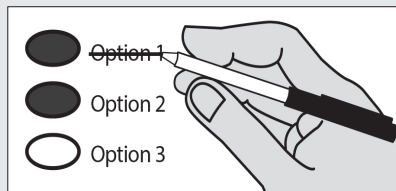


Use a blue or black ink pen to completely fill in the oval to the left of your choice.

Vote for one in each race.

If you vote for more than one, no votes will be counted for that race.

### If you make a mistake



Draw a line through the entire response or candidate's name.

Then you may make another choice.

### Optional write-in



To vote for a candidate not listed, fill in the oval to the left of the line and print the name of the candidate.